

QPM16-3 Three Phase Meter

Dual Source Prepayment Meter



Overview

QPM16-3 is a three phase prepayment meter designed for industrial and commercial applications. The QPM16-3 is able to monitor and measure active/reactive energy with extended functionality and high accuracy. It support optional RF and GPRS communication module for different field application (such as dual-source control), and the system remote configuration is available for smart grid. It complies with DLMS Suite standards and multiple technical solutions for AMI or AMR.

DLMS

DLMS Suite 0 and Suite 1, provide high security and stability to communication.

Dual Source

Available for the dual supply. Meter can fast change the tariff according to the actual supply.

STS

STS standard protocol ensures an open operating system with high security.



Highlights

- STS standard protocol ensures an open operating system with high security. Support open protocol: DLMS/COSEM(E-Mode), IEC 62052-11, IEC62053-21, IEC 62055-41, IEC 62056-21.
- Prepayment/Post-payment mode switch and comply with the Dual Source function. Local and remote firmware upgrade.
- Extended RS485 and interface communication port comply with E-Mode. Remote communication module GPRS, RF, PLC-G3 or G4, and NB-IoT for AMR/AMI system.
- Relay control for load demand by remote communication or local configuration.

Main Function

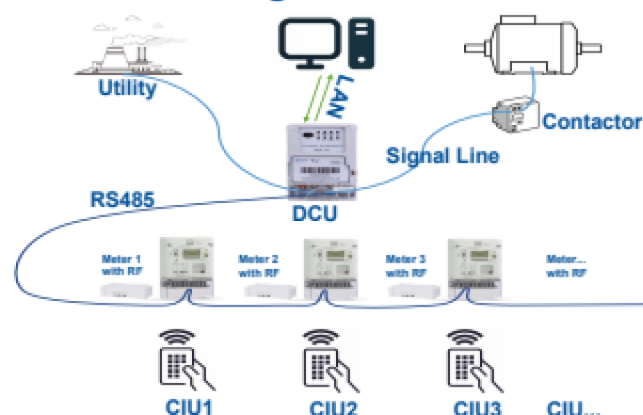
- Measure active (kWh), reactive (Kvarh) for total/separately energy resistors for import and export, instantaneous value, maximum demand value, billing data, event records, historical data and consumption profile.
- High performance LCD display with backlight (up to 8 digits).

- Standard or extended load profile data recording (up to 8 data channels)
- Standardized OBIS display. Real time clock(RTC): clock with calendar, timing, year change function. Display readable without main power (RWP).
- Multiple event detections and records with categories of operation, power grid and tampering. Channel quantity customized before leaving the factory; up to 8 channels.
- Open meter cover and terminal cover detection.
- Prepayment via a numeric token with extended ways of recharging.
- Data for load profile record configuration.
- User-friendly mode for energy supply in low credit during weekends or holidays.
- Emergency Credit for a certain sum of energy supply depending on User's credit level.
- External and replaceable battery supply.
- LED alarm/buzzer alarm reminding, when low credit, overload, and tamper.

Technical Specification

Accuracy	Active	0.2S, 0.5S, 1.0
	Reactive	2.0
Voltage	Rated current	3×57.7/100V, 3×220/380V, 3×230/400V, 3×240/415V 3×100V, 3×380V, 3×400V, 3×415V
	Range	0.8Un-1.2Un
	Limit	0.7Un-1.3Un
Frequency		50Hz/60Hz
Basic Current (Ib)	Range	3×1.5A, 3×5A, 3×10A
Maximum current (Imax)	Range	3×6A, 3×40A, 3×60A, 3×80A, 3×100A
Starting current		0.4%Ib, 0.001In(CT), 0.001In(CT)
Display	Type	LCD
	Digit	6+2
Power	Voltage circuit	≤2.0W, 10VA
Consumption	Current circuit	≤4VA
Communication	Interface	Optical/RS485/PLC/RF/GPRS/3G/4G
Temperature	Working	-25°C to +65°C
	Storage	-35°C to +75°C
Humidity		≤85%
Ingress Protection		IP54
Dimension		90mm*170mm*269mm
Weight	Net weight	1.8kg
	Weight	2.2kg

Schematic Diagram



Demention

