

QPM1002C Customers Interface Unit



Overview

QPM1002C Customer Interface Unit (CIU) is an intelligent product used in combination with a split type prepayment meter. The main functions include display, communication, keyboard input, balance alarm and other functions.

RF-Lora

The CIU is designed with interface for Lora communication to meter.

Single/Dual Source

Available for the Single/dual supply. Meter can fast change the tariff according to the actual supply.

Fast Respond

With high quality processor, advanced operating system, fast response, high system stability.

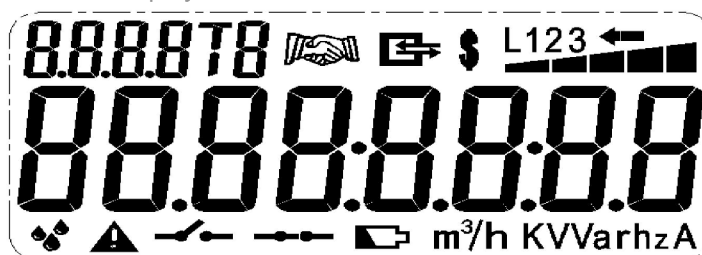


Main Features

- ❖ High accuracy of IEC standards Class1.0 (Active) or Class2.0 (Reactive).
- ❖ Wide voltage range: 18~24V DC
- ❖ Wide power grid frequency: 46~65Hz
- ❖ Backup battery (only for PLC and RF communication type)
- ❖ Operating temperature range: -25℃ ~+ 60℃
- ❖ Protection level: IP54
- ❖ MTTF: ≥15 years

Main Function

- ❖ LCD Display



Function Information

LCD Display Information	Description
	Data area
	OBIS display area
	Unit display area
	In communication
	Credit Status Indicator
	Battery low indicator
	Event Alarm Indicator
	Relay connect
	Relay disconnect
	Successful recharge indication
	Recharge failure indication
	Credit indication
	Status indication

Technical Specifications

Item	Technical Parameter
Limit working voltage range	M-bus: 18~24V DC
	RF/PLC: 220~240V AC
Limit working temperature range	-40℃ ~+85℃
Protection Level	IP51
Relative humidity	≤95%
Weight	0.2kg

Dimension diagram

